

**2024**  
MODEL YEAR

CLASS A GAS  
**ADMIRAL**

**HR** HOLIDAY RAMBLER  
holidayrambler.com

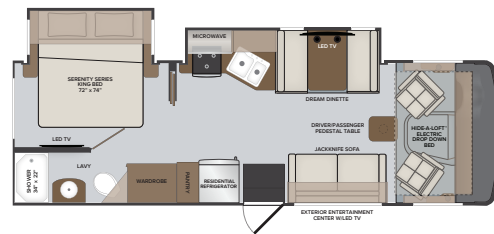
28A | 29M | 32N | 33B6



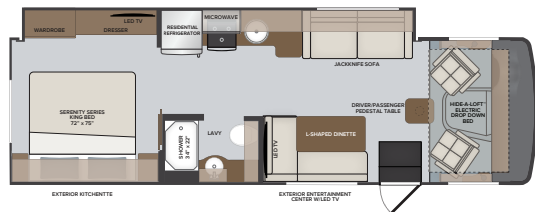
**TOP FEATURES**

- Ford 7.3L V8. (335 HP, 468ft.lb.)
- 16K - 22K chassis
- 8,000 lb. tow hitch
- Pre wired for solar panel
- Side-View Camera Integrated in Exterior Mirrors
- Wifi Ranger comes standard boosting any existing Wifi signal
- 50 Amp service
- MultiPlex house controls that can be controlled by your smart phone or tablet
- Large Exterior 50" LED TV.  
*Largest exterior television at this price point*
- Standard Hide-A-Loft™ electric drop down bed.
- Standard residential refrigerator. *LP refrigerator optional.*
- No luan backer on fiberglass sidewall reducing the possibility of delamination.
- Large one piece panoramic windshield

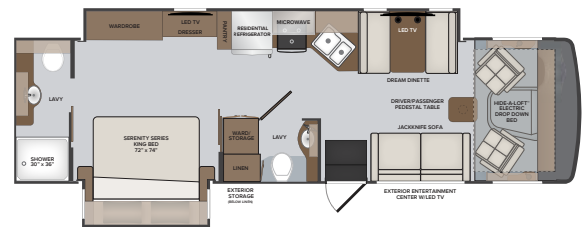
28A



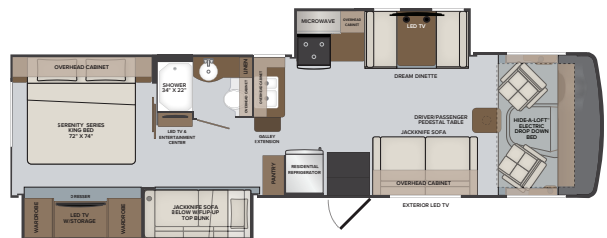
29M



32N

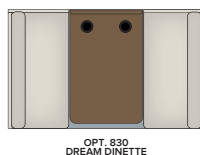
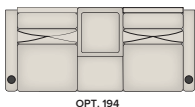
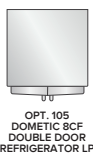


33B6



**AVAILABLE OPTIONS**

- Double Door Dometic 8 cu. Ft<sup>3</sup> LP Refrigerator
- Manual Theater Seating (28A, 32N & 33B6)
- Dream Dinette (29M)
- Power Driver's Seat
- King Stationary Satellite Universal System
- Roof Vent Covers
- Dual A/C with 5500 watt Generator (29M)
- Dual A/C (11k) with EMS\* LP Refrigerator (28A)
- Steering Stabilizer System



**2024**  
MODEL YEAR

CLASS A GAS  
**ADMIRAL**

**HR** HOLIDAY RAMBLER  
holidayrambler.com

28A | 29M | 32N | 33B6

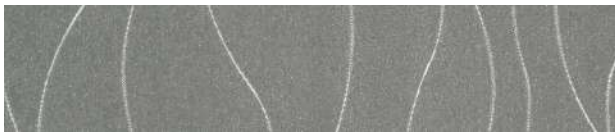
**ELEVATE**



SOFA



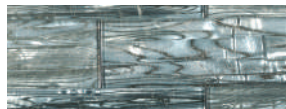
LIVING ACCENT



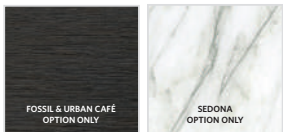
BEDDING



VALANCE



BACKSPLASH



COUNTERTOP



FLOORING

**CAMELBACK**



SOFA



LIVING ACCENT



BEDDING



VALANCE



BACKSPLASH



COUNTERTOP



FLOORING



FOSSIL



**NEW**  
MY2024

URBAN CAFÉ



**NEW**  
MY2024

GUINNESS

**NEW CABINERY  
DOOR PROFILES FOR  
MODEL YEAR 2024**

**CHASSIS**

MODEL	28A	29M	32N	33B6
Wheelbase	190"	190"	208"	208"
Front GAWR (lbs)	6,500	7,000	8,000	8,000
Rear GAWR (lbs)	11,000	12,000	15,000	15,000
GCWR (lbs)	21,000	23,000	26,000	26,000
Hitch Rating Weight (lbs)	8,000	8,000	8,000	8,000
Tongue Weight (lbs)	800	800	800	800
Fuel Capacity (gal)	80	80	80	80

**FORD® CHASSIS**

Model: Ford®



Engine: 7.3L Triton V8

Transmission: Ford® 6-Speed, Automatic w/Overdrive

Alternator: 210 Amp

Torque: 468 lb.-ft. @ 3,750 RPM

Horsepower: 335HP @ 3,750 RPM

**DIMENSIONS AND CAPACITIES**

MODEL	28A	29M	32N	33B6
Overall Length	29' 3"	31' 0"	33' 6"	34' 7"
Overall Height	12' 4"	12' 4"	12' 4"	12' 4"
Overall Width*	100"	100"	100"	100"
Interior Height*	82"	82"	82"	82"
Interior Width*	96"	96"	96"	96"
Patio Awning Width	20'	20'	14'	12'
Interior Storage (cu. ft.)	81	92	97	121
Exterior Storage (cu. ft.)	70	45	83	93
Fresh Water Capacity (gal)	50	50	50	50
Grey Water Capacity (gal)	37	37	37	37
Black Water Capacity (gal)	37	37	37	37

\*Overall Width, Interior Height and Interior Width measured with slide-box in.

EXTERIORS



**HIGH TIDE**



**DOCKSIDE**

ADMIRAL

**LAMESA RECREATION**

LaMesaRV.com  
800-496-8778

©2023 REV RECREATION GROUP, INC. PRINTED IN USA. INVENTORY CONTROL ADMIRAL24F1, 6/23. MODEL YEAR 2024